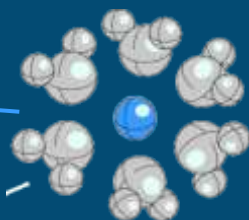
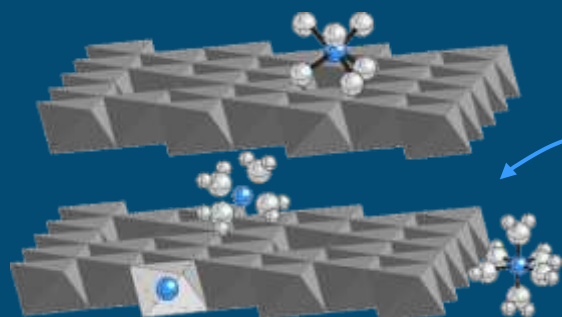


Molecular Environmental Biogeochemistry

Abundance & Distribution of Metals in the Environment

Mechanisms & processes at the metal-microbe-mineral interface



Cohen
GEOCHEMISTRY

Caroline L Peacock



Amy Atkins



Adam Fuller



Janice Littlewood



Sophie Dixon



Tomasz Stawski



Daniela Meier



Taher Rabizadeh

Abundance & Distribution of Metals in the Environment

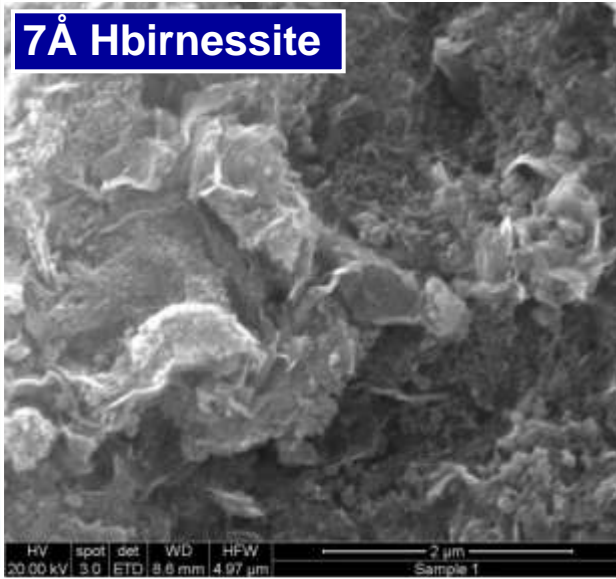
- Bioessential trace-metals - Ni, Cu, Mo...
Redox sensitive trace-metals - Cr, Tl...
- Co-Evolution of Life & the Planet - Chemical Evolution of the Oceans
- Toxic heavy-metals and radionuclides - Ni, Cu, Cr, Cs, Sr
- Fate and Mobility in the Environment

**CONTROLLED BY METAL-MICROBE-MINERAL
INTERACTIONS**

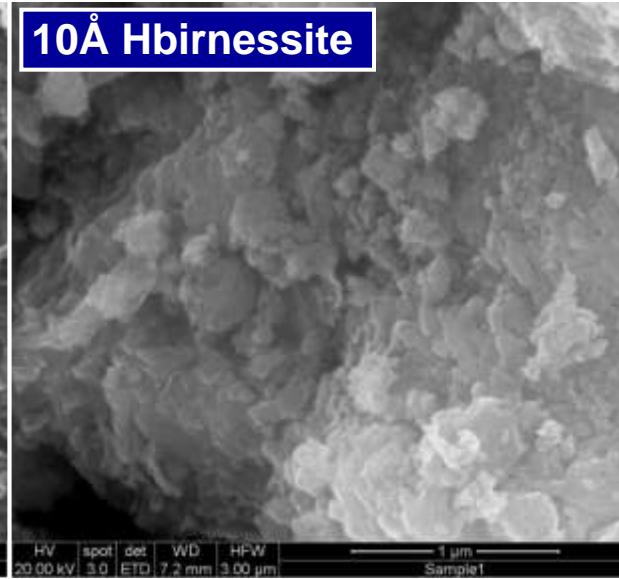
Amy Atkins - Controls on Ni abundance in seawater

SEM images of time-series samples

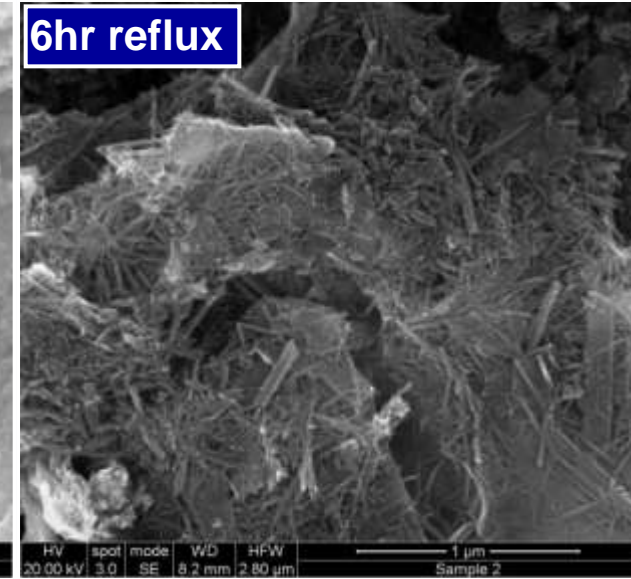
7Å Hbirnessite



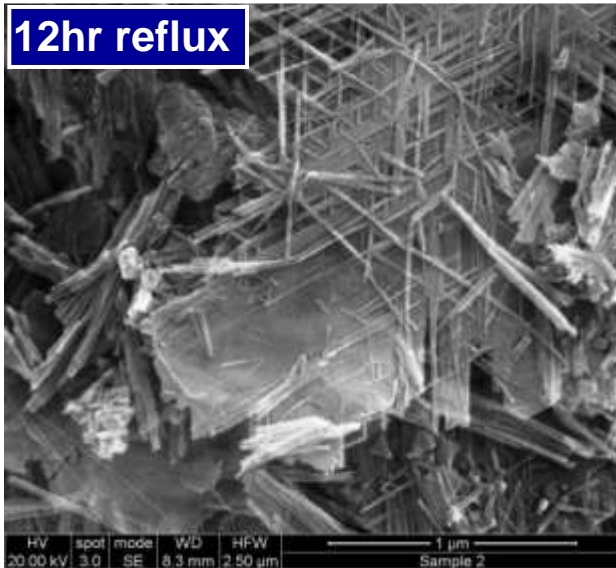
10Å Hbirnessite



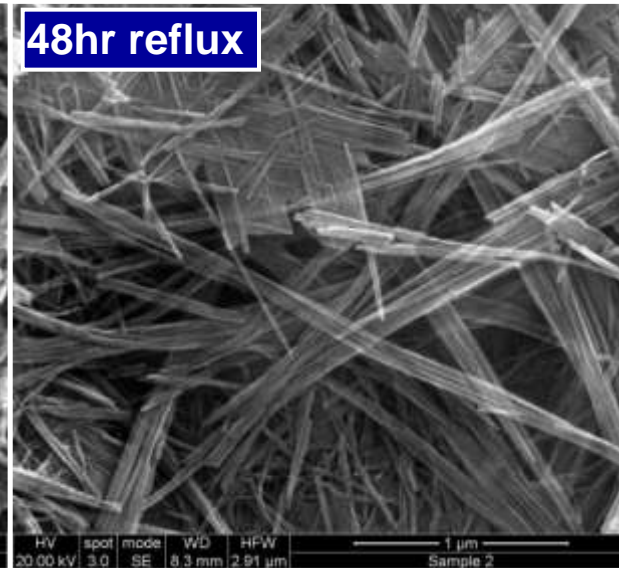
6hr reflux



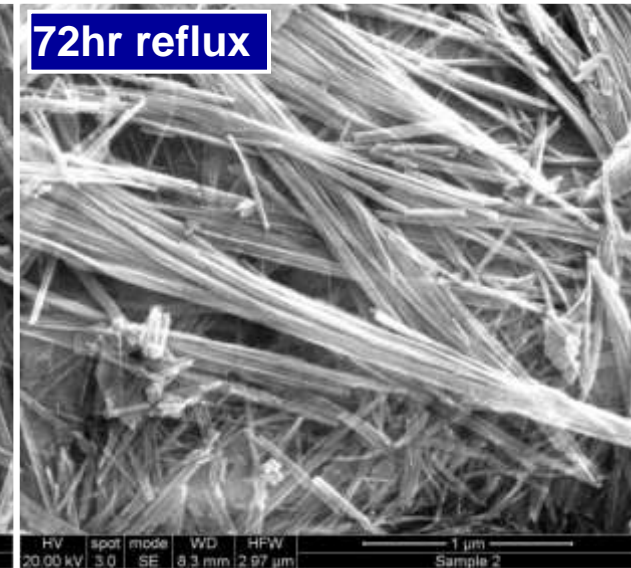
12hr reflux



48hr reflux



72hr reflux



TEM images of time-series samples

